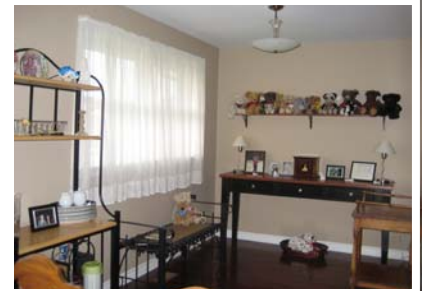


424 Base Line Road E \$229,900



Old South Ranch

- * Beautifully updated ranch with attached single car garage with inside entry
- * Newer hardwood flooring on main floor
- * Cozy wood burning fireplace in living room
- * Black ceramic flooring in hallway and kitchen
- * Updated kitchen with newer appliances
- * Tastefully painted throughout in attractive shades
- * Three generous sized bedrooms - all with large windows
- * Attractive Terrazzo flooring in main bathroom
- * Lower level rec room with bar area, huge laundry room and lots of storage
- * In close proximity to Wortley Village, London Health Sciences and Downtown
- * Walking distance to Mountsfield Public School and South Secondary

Approximate Room Sizes

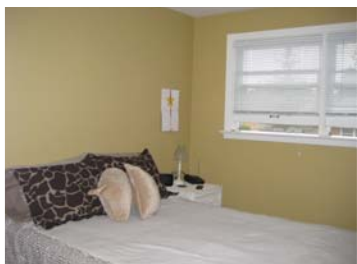
Main Level

Living Room	17'0	x 13'0
with wood burning fireplace		
Dining Room	11'0	x 9'0
Kitchen	11'0	x 11'0
Bedroom	11'0	x 8'4
Bedroom	10'10	x 10'11
Bedroom	11'10	x 9'5
4 Piece Bathroom		

Lower Level

Rec Room	22'9	x 15'5
Laundry Area	20'0	x 13'2
2 Piece Powder Room		

Room sizes are approximate and should be verified by the Purchaser



Of Note

2009 Taxes: \$3,273.00
Possession: 60 Days
Lot Size: 60' x 106.72' x 72.3' x Irr
Inclusions: Fridge, Stove, Dishwasher, Washer, Dryer



MARY PELLARIN

Sales Representative

519-672-9880
 pellarin@rogers.com



Independently Owned and Operated